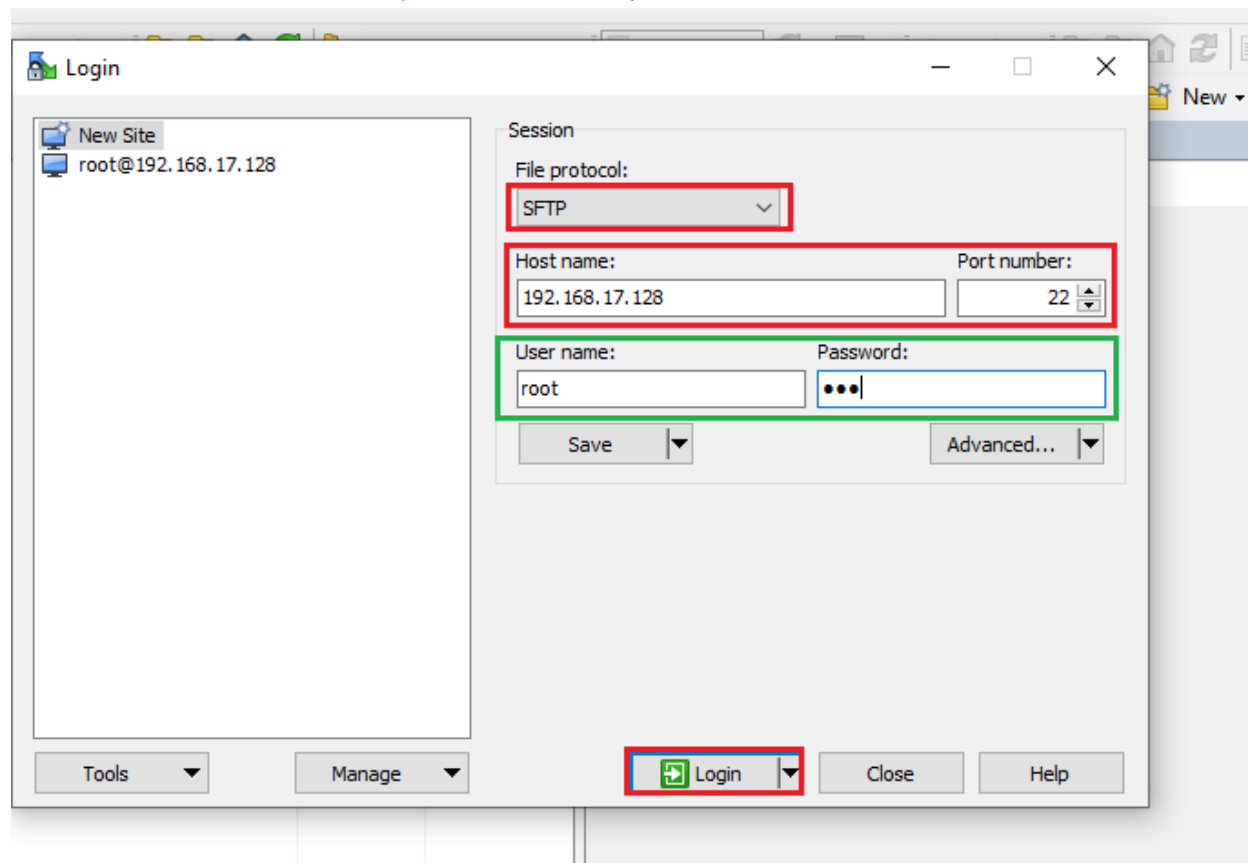
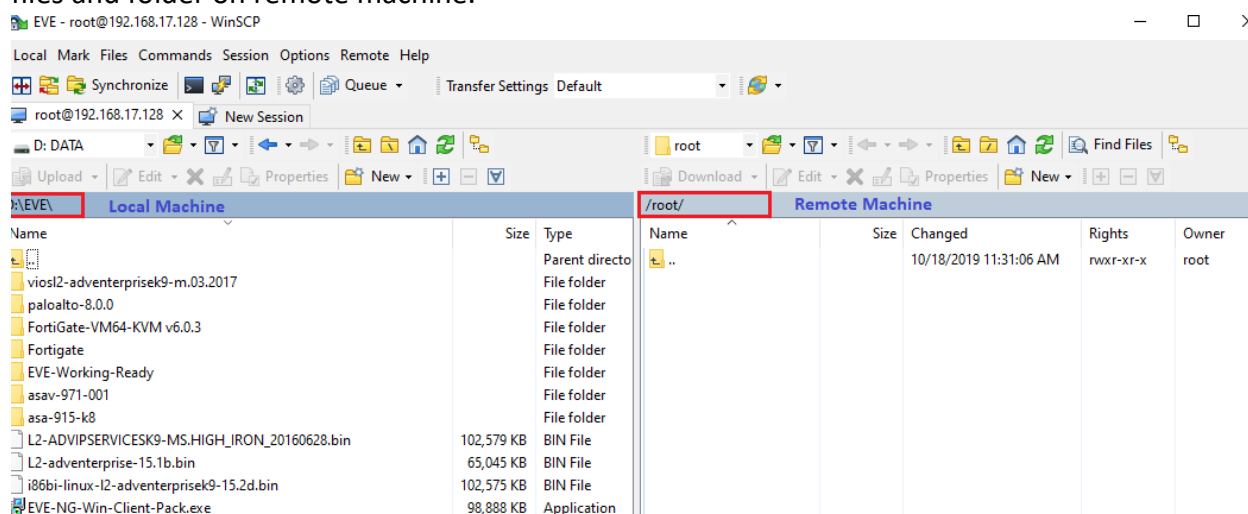


Upload Palo Alto in EVE-NG:

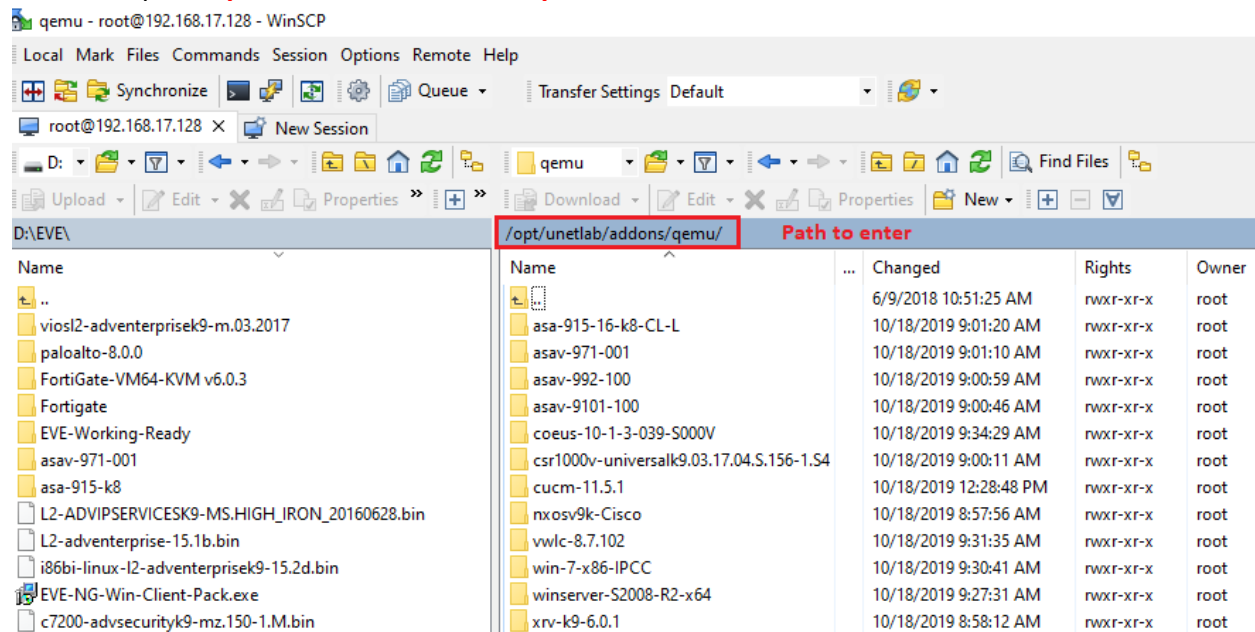
Open **WinSCP**, once you connected to WinSCP type the IP address of EVE-NG in host name choose the File Protocol: **SFTP**, Port number: **22**, User names: **root** and Password: **eve**.



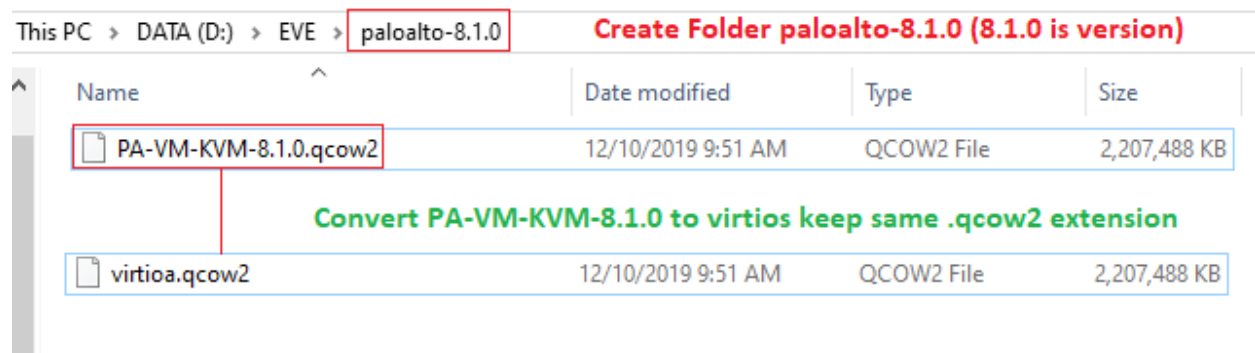
The column on the left represent file on local machine and the column on the right represent files and folder on remote machine.



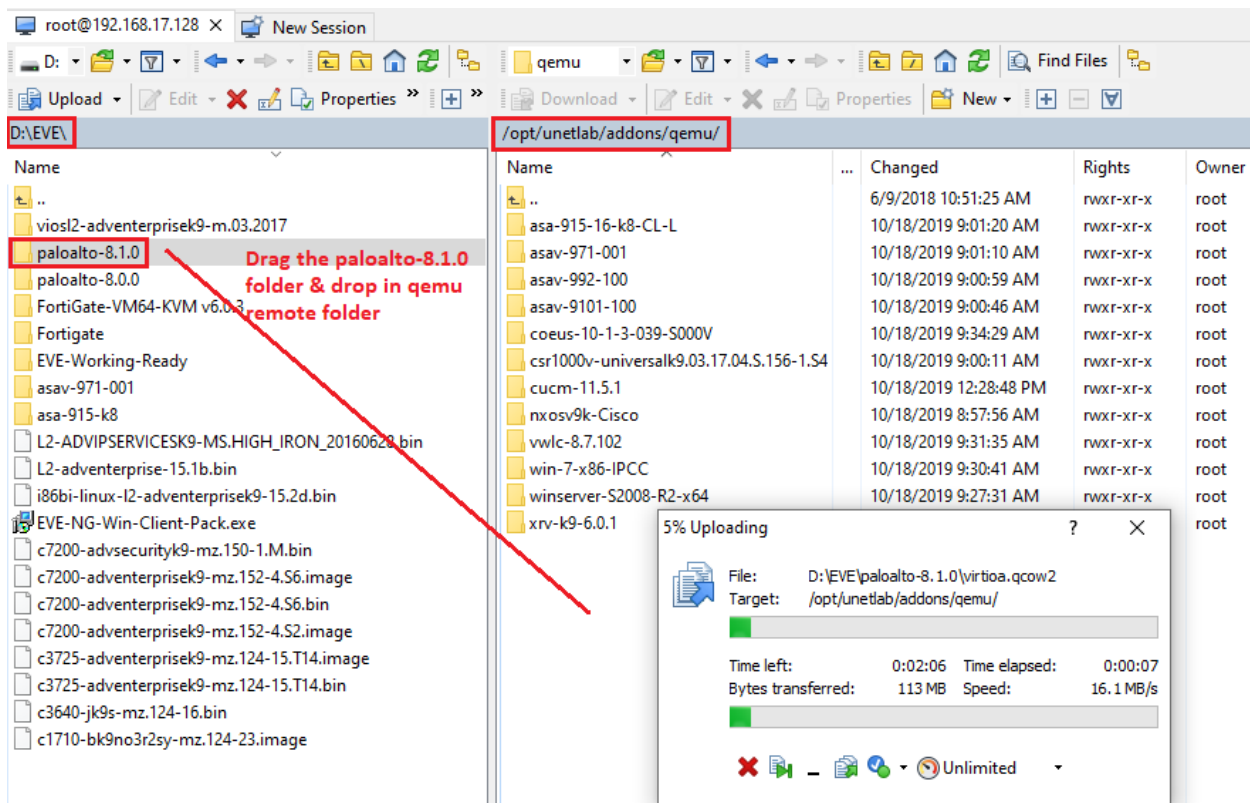
Go to the path **opt->unetlab->addons->qemu** on the remote machine.



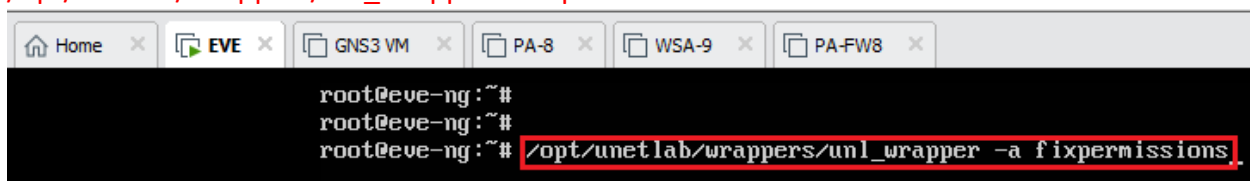
Create a directory in your system using the name: **paloalto-8.1.0** copy the file downloaded to paloalto-8.1.0 folder rename **PA-VM-KVM-8.1.0.qcow2** to **virtioa.qcow2** the name must be: **virtioa.qcow2**



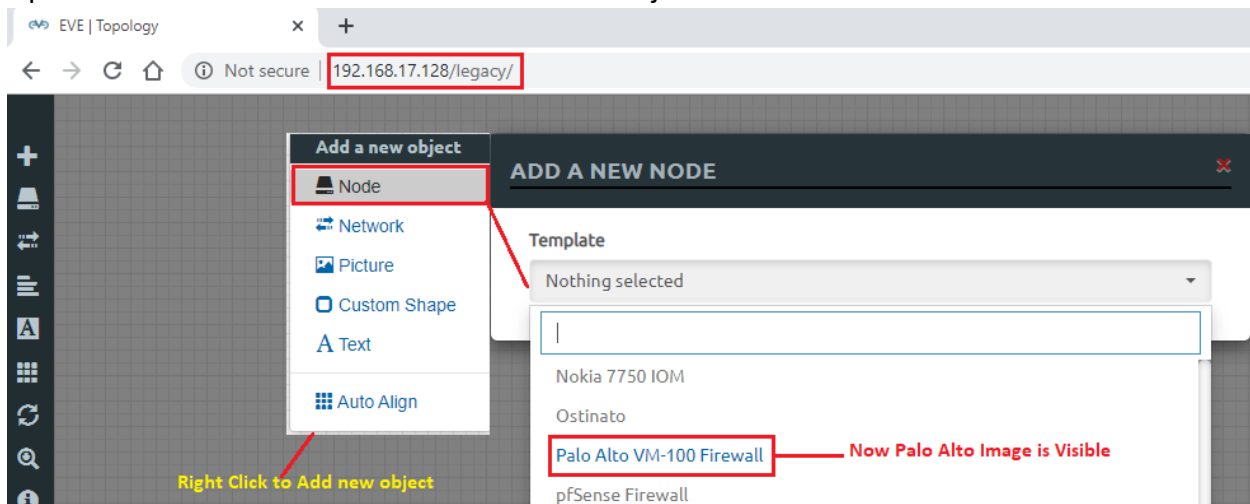
Navigate to the folder from local to remote machine and upload. Once the process completed the file will be available immediately.



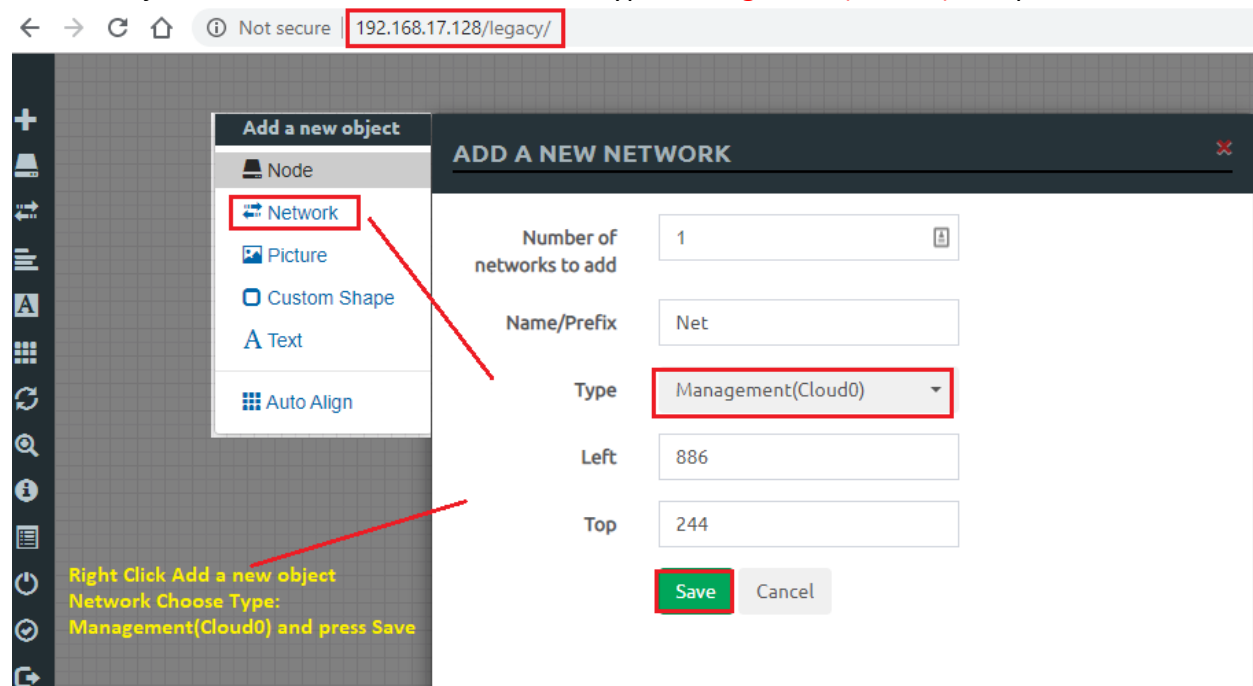
Save the configuration by fixing the permissions using the following command on EVE-NG.
`/opt/unetlab/wrappers/unl_wrapper -a fixpermissions`



Open the EVE-NG in the browser then 'Add an Object' and select the Node.



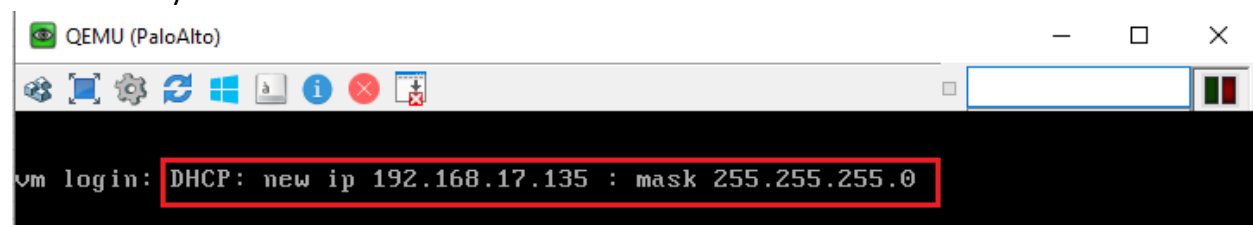
Add an object' and select the Network make Type **Management(Cloud0)** and press Save button.



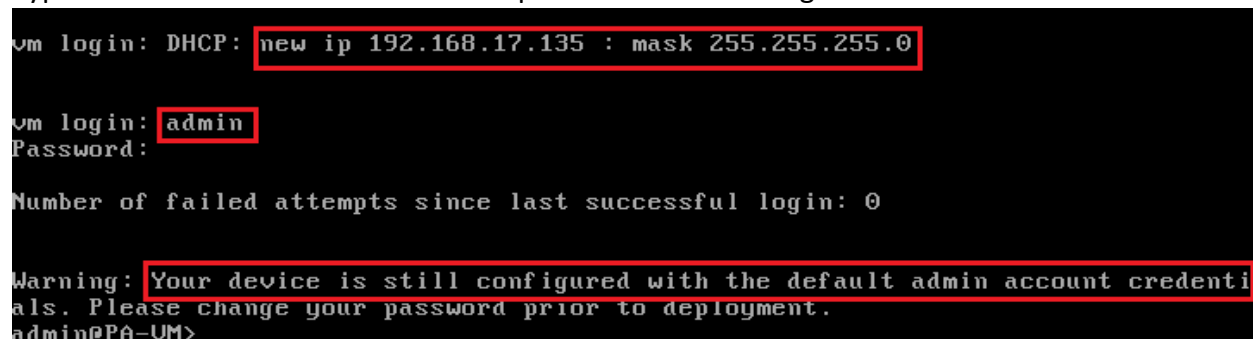
Connect Network Object to PaloAlto **mgmt.** port.



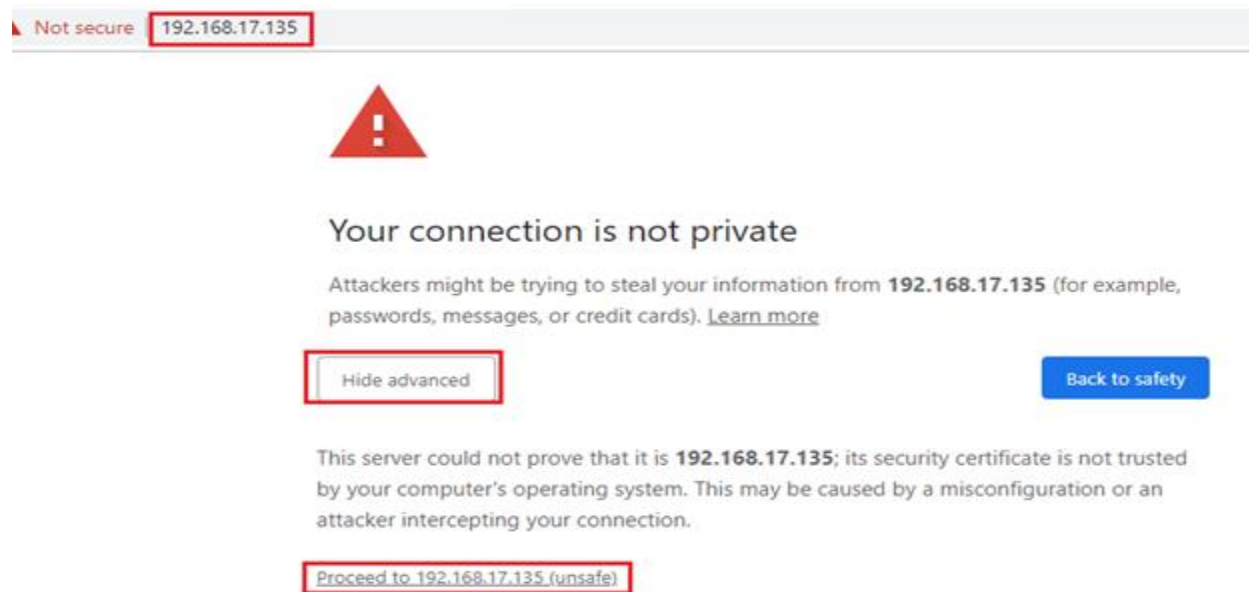
Start the PaloAlto node, Wait for mint or two. It will get the IP address from DHCP server if available or you can set static IP address.



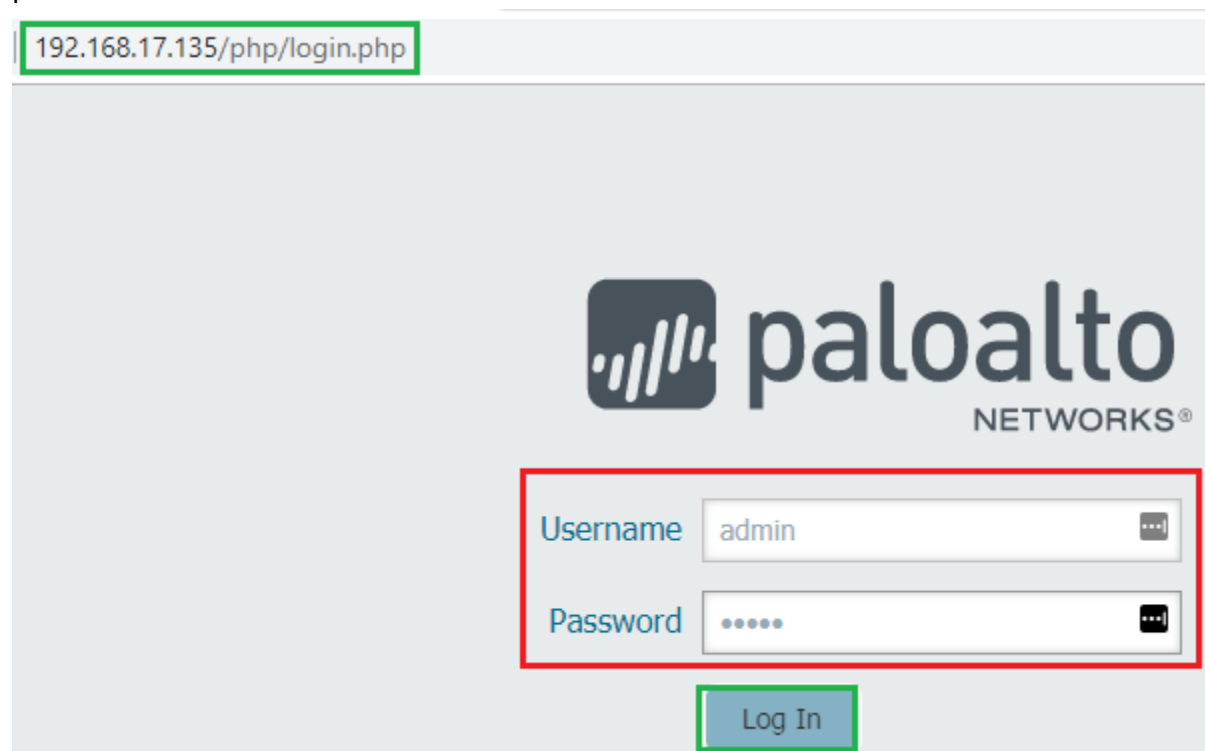
Type the default username **admin** and password **admin** to login to Palo Alto Firewall.



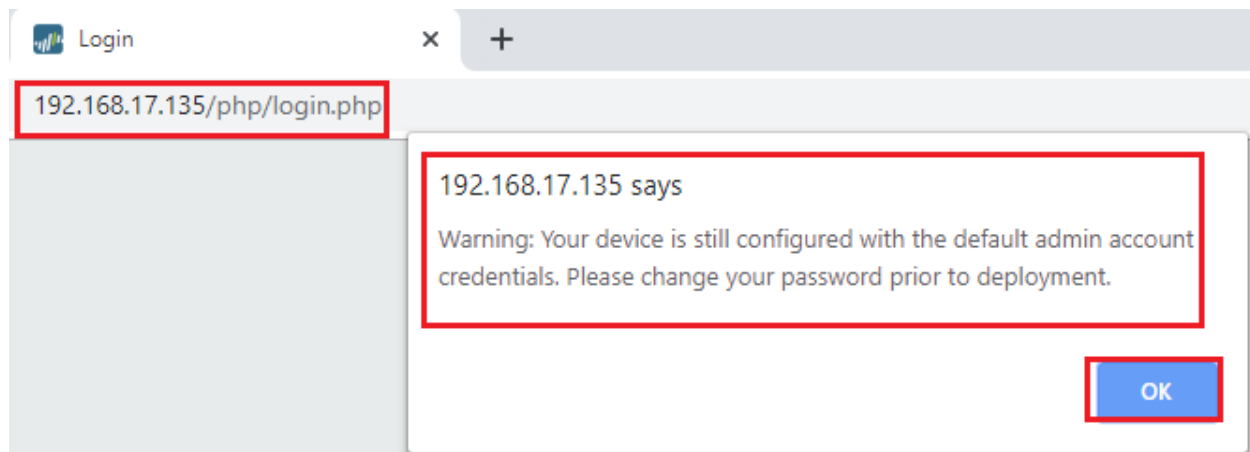
Now can manage the PA-VM node via GUI, Use the computer that connected to management network; then use web browser to navigate <https://192.168.17.135> Login using **admin/admin** This is the error of local signed cert, just ignore it and proceed with the connection.



Type the IP address of Palo Alto Firewall in nay browser, Default username is **admin** and password is **admin**



There will be pop-up asking to reset the password to new one as you logged in with default password. Need not to worry and click on OK.



GUI window for Palo Alto, this is the dashboard.

